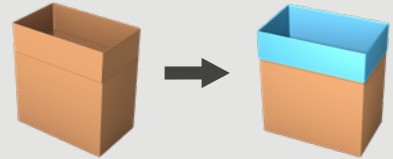


## BAGMAKER INSERTER RAZIM-51

From a roll of **gusseted** film, the RAZIM-51 automatically makes, cuts and perfectly inserts bags into boxes and crates, trays, tins or pails at high speed.



REVOLUTIONIZING  
BAG  
INSERTION

### Next level bag inserting

- Bags inserted perfectly into the box
- The best bottom seal on the market
- Can place multiple bags in one box
- Hygienic thanks to bags from a roll system
- Premade bags, Made-to-Measure bags or both

### High flexibility, high speed

- Up to 15 cases / minute.
- Handles a multitude of boxes and crate sizes
- One machine for multiple footprints and heights
- Random box heights
- Low energy consumption



Watch our videos  
at [pattyn.com](http://pattyn.com)

# TECHNICAL SPECIFICATIONS

## RAZIM-51

### Leakproof bag

- Impulse sealing for a controlled, clean and leakproof seal.

### Failsafe bag opening

- Mechanical grippers instead of delicate vacuum cups.

### Perfectly controlled bag insertion

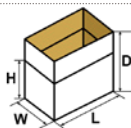
- Case flap holders for perfect case flap positioning.
- Integrated mechanical plunger.

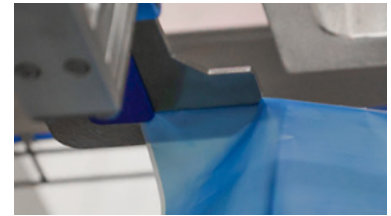
### For specific needs and specific products

- Perfect bag insertion as required for crystallizing products such as cocoa butter, CBS, fondant sugar.
- Use of different types of gusseted tubular film for a wide range of applications. Perfect for robotic filling.
- Use of multi-layer high barrier film for different applications.
- Insertion of two bags in one box for high demanding industries.

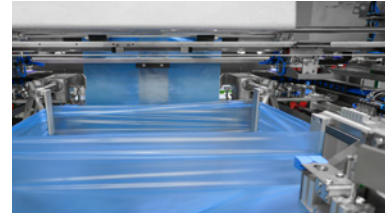
### Standard equipped with:

- Integrated mechanical plunger
- Maintenance free V-shaped guillotine knife for a perfect film cut
- Intuitive 15" HMI for easy operation

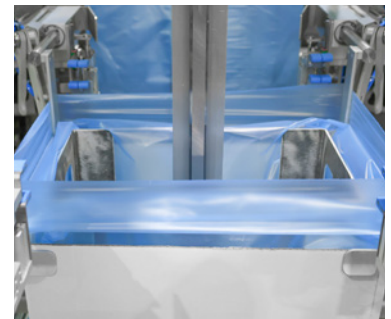
CONTAINER SPECIFICATIONS (For other dimensions, please contact Pattyn)	
Type	Boxes, crates, trays, tins or pails
Range (L x W // D) inches	<b>Mono or multi footprint (L x W)</b> Min. 12" (L) x 8" (W) // 4" (D) (crates) Min. 12" (L) x 8" (W) // 10" (D) (cases) Max. 25" (L) x 18" (W) // 25" (D)
	Outside dimensions
FILM SPECIFICATIONS	
Type	<b>Gusseted tubular film*:</b> aluminium coated film, multi-layer high barrier film
Thickness	As from. 0.6 mil
Weight of film roll	Max. 132 lbs
Outside diameter film roll	Max. 18"
Inside diameter of core	3"
OUTPUT AND CONSUMPTION	
Output single liner	Up to 15 c/min
Output double liner	Please contact Pattyn
Installed power	11,5 kW
Voltage	3 x 480 V + E / 60 Hz
Air supply	90 PSI, (1/2" min)
Air consumption	2 ft <sup>3</sup> / cycle
Weight	4630 lbs
OPTIONS (More options are available, please contact Pattyn)	
Advanced stainless steel execution	One line sealing - double sided heating
Bag-in-box detection (external)	Cross seal unit
Thermo transfer printer for real time printing on bags (traceability)	
Multiple case heights	



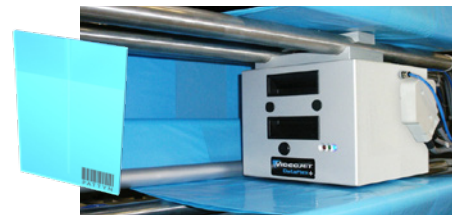
Mechanical grippers



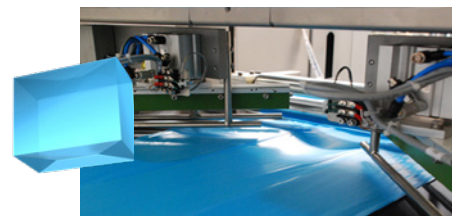
Servo motor-driven spoon module



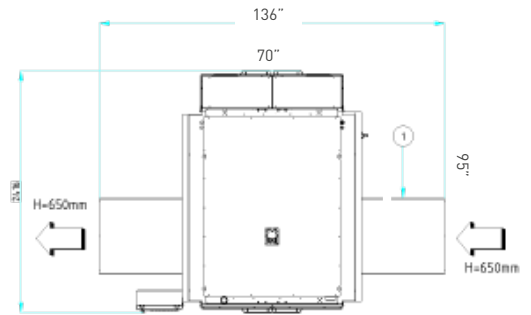
Integrated mechanical plunger



Optional thermo transfer printer



Optional corner seal unit 45°



Machine height 132"

*Machine height as reference only,  
depending on case height.*

Pattyn North America Inc.  
N56W24660 N. Corporate Circle  
Sussex, WI 53089 - U.S.A

Ph +1 262-966-0300  
Fax +1 262-966-0312  
SalesUsa@pattyn.com



The description, pictures and information given have an indicative value. We reserve the right to make changes without notice. Information and content are property of Pattyn. For customized executions please contact Pattyn.