



Turnkey solutions
to fill and pack chocolate into
lined containers and pails



Your product safely packed

To meet the **food safety standards**, it is important to invest in a **reliable and automated packaging solution**. Pattyn offers fully automated solutions for **solid** and **liquid** chocolate packaging, from case erecting to palletizing, all 100% developed in-house.

No more worries about product giveaway, food safety or packing quality.

All types of containers can be used.



Adapted solution depending on the actual line speed and product



Filling and weighing directly in the box



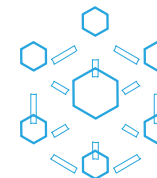
Scalable solution based on capacity



50 years of experience in bag-in-box packaging

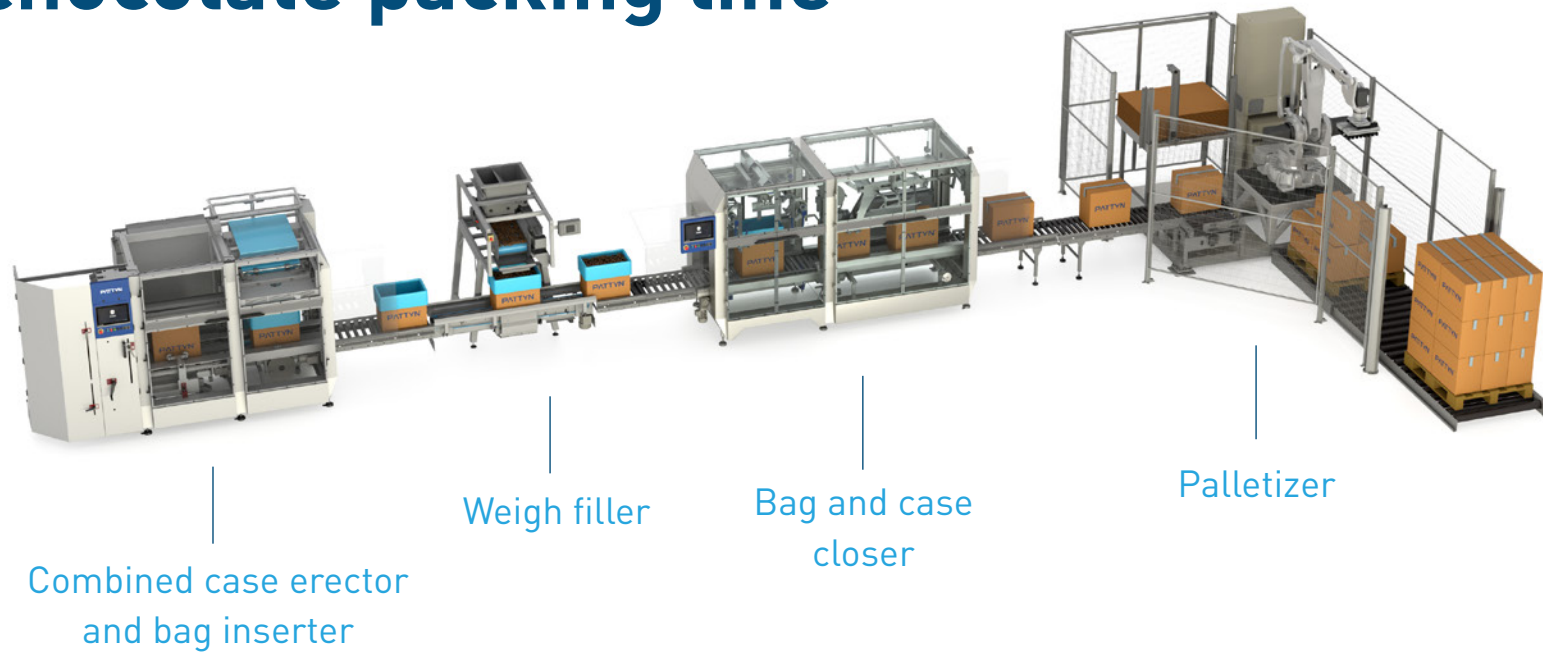


100% Pattyn-made



Interconnectivity for the future

Solid chocolate packing line

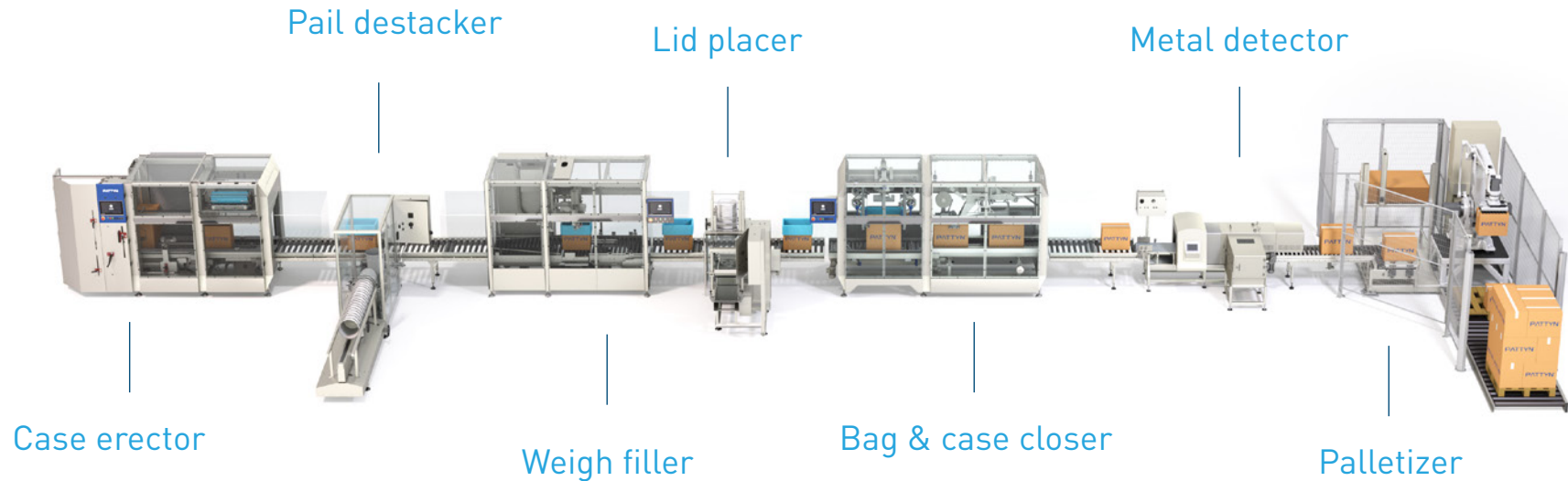


LBVF-34A

- Designed for **solid** chocolate products: drops, chunks, curls,...
- Filling and weighing directly in the box
- **High accuracy**, combined with high speed
- Linear vibrating filler (optional with belt) with two filling positions:
 - Vibrating conveyor or belt for **coarse filling**
 - **Separate** vibrating pan for **fine dosing**
- Up to **5 cases/minute**



Liquid chocolate packaging line



AVL-42

- Designed for **liquid** chocolate products: cocoa butter, cocoa mass, CBS, ...
- **Compact** and most **accurate** weigh filler
- **Minimizes** your product **giveaway**
- Weigh filling system with **fast / slow dosing** and automatic after-fall correction
- Especially designed ultra-light scales
- Standard jacketed and 90° curved valves for a **turbulent-free product flow**
- Up to **12 cases/minute**



Join us for a worry-free journey

From initial discussion to long-term support, Pattyn guides your packaging project every step of the way.

Define needs



A deep understanding of your business, built on careful listening.

Propose solution

Drawing on broad packaging expertise, we deliver the best fit for your products.

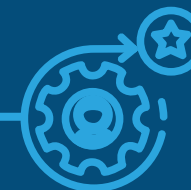


Guide entire project

A dedicated project manager oversees your project from design to testing.

Lifetime support

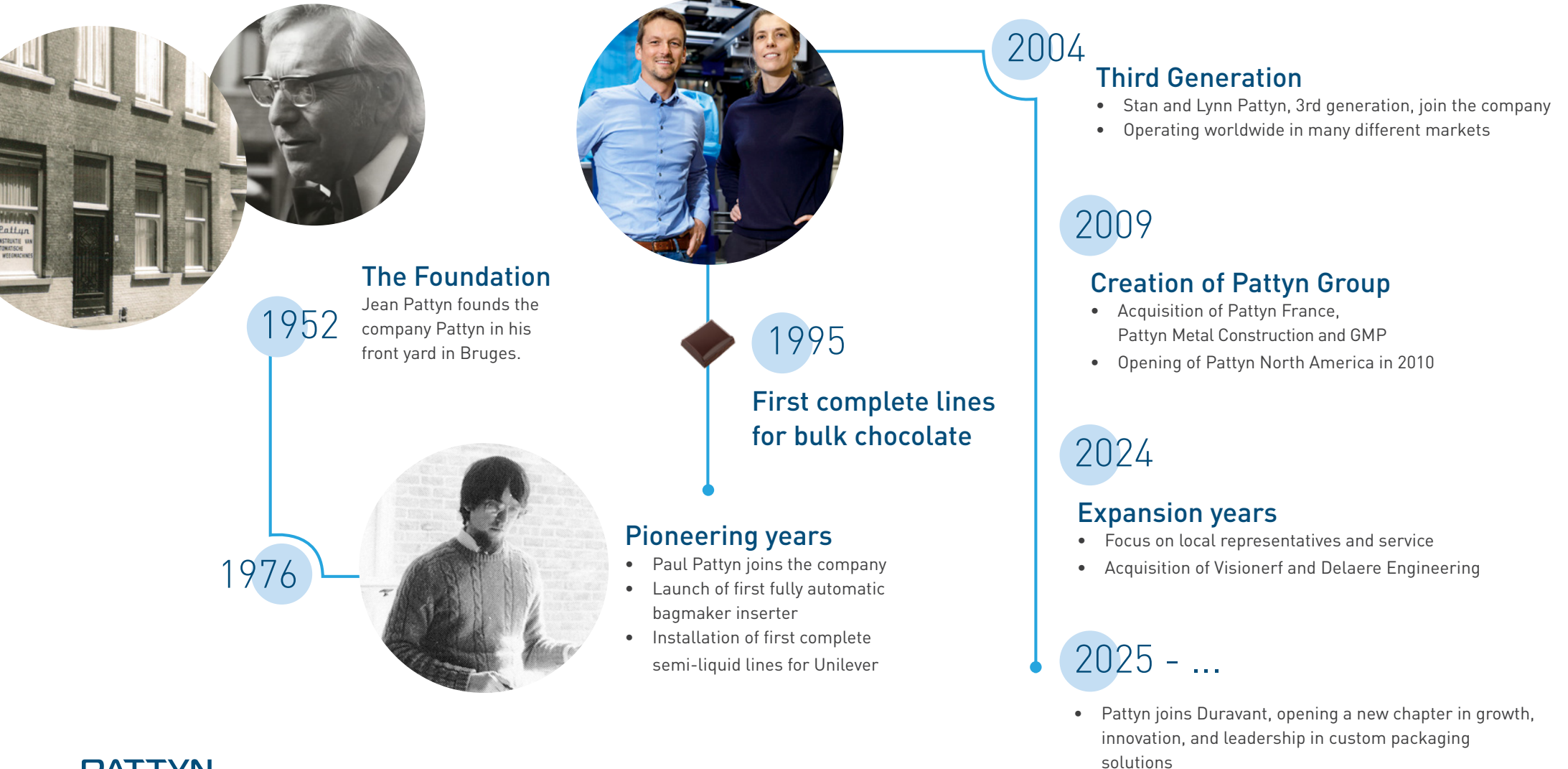
Ongoing after-sales service, expert advice and 24/7 access via Pattyn360.



Project start-up

Our service engineers install your line on site and train your team.

The Pattyn story



Worldwide support

WITH MORE
THAN **600** 
employees

THE PATTYN GROUP SUPPORTS
MORE THAN  **1500**
customers worldwide



Satisfied customers



... and many more

Pattyn Belgium NV
Brugge - Belgium
T+32 50 450 480
info@pattyn.com

Pattyn North America, Inc
Sussex, WI - USA
T+1 262 966 0300
salesusa@pattyn.com

Pattyn Asia
Kuala Lumpur - Malaysia
T +60 014 859 9152
info.asia@pattyn.com