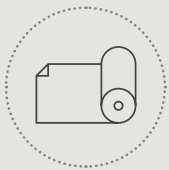
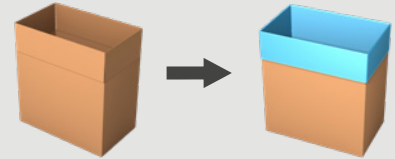


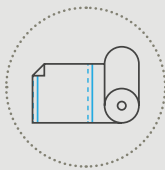
BAGMAKER INSERTER FLEXIM-41

From a roll of polyethylene film, the Flexim-41 automatically makes, cuts and inserts bags into cases, crates, trays, tins or pails. The bagmaker inserter is standard equipped with fully automatic format change.

The bagmaker inserter runs with **made-to-measure bags** or **pre-made bags from a reel**.



made-to-measure bags from a reel



pre-made bags from a reel

SOF seal off first



Minimize your bag cost

- **Save up to 30%** with made-to-measure bags from a reel.
- **Less film used** thanks to a perfectly controlled bag insertion.
- PE film starting from **0.4 mil**.

High performance & trouble-free production

- Up to **22** cases/minute.
- Up to 4000 bags on one reel for **higher autonomy**.
- **Elimination of operator errors** thanks to the fully automatic format change.
- Quick and **ergonomic film roll exchange** from the operator side.
- **15" HMI** to facilitate operator convenience

TECHNICAL SPECIFICATIONS

Leakproof bag

- Impulse sealing for a controlled, clean and leakproof seal.

Failsafe bag opening

- Innovative gripper and spoon module.
- Patented smart film opening technology with a special vacuum and air insertion system.

Perfectly controlled bag insertion

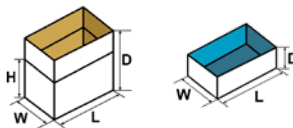
- Case flap holders for perfect case flap positioning.
- Smart box lift for vertical box positioning.

Use of stepper motor technology

- High speed.
- Self-resolving.

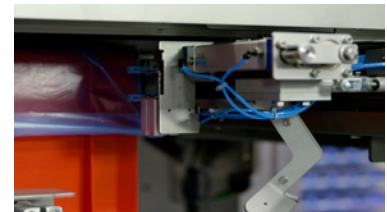
Standard equipped with:

- 15" HMI for easy operation.
- Maintenance free V-shaped guillotine knife for a perfect film cut.
- Remote access point (one per line).

CONTAINER SPECIFICATIONS (For other dimensions, please contact Pattyn)	
Type	Cases, boxes, trays, crates, tins, pails, polystyrene cases, ...
Range footprint (L x W // D) inches	Multi or mono footprint (LxW) / variable heights Min. 12" (L) x 8" (W) // 4" (D) (crates) Min. 12" (L) x 8" (W) // 10" (D) (cases)* Max. 31 1/2" (L) x 19 1/2" (W) // 25 1/2" (D)
	Outside dimensions * When combining cases and crates, the minimum height D = 260 mm * Cross seal unit 45° on both sides of the bag (6" < D < 18")* (Outside dimensions)
*7" < D < 10"	Adapted bag cuff
*D < 7"	Modified box lift necessary
FILM SPECIFICATIONS	
Type	Tubular film with gussets (side folds)
Thickness	As from 0.4 mil
Weight of film roll	Max. 132 lbs
Outside diameter film roll	Max. 18"
Inside diameter of core	3"
OUTPUT AND CONSUMPTION	
Output	Standard 14 c/min, up to 22 c/min
Installed power	4,5 kW
Installed power with cross seal unit	6 kW
Voltage	3 x 480V + E / 60 Hz
Air supply	90 PSI, (1/2" min)
Air consumption	2 ft ³ /cycle
Weight	1984 lbs
OPTIONS (More options are available, please contact Pattyn)	
Fast machine: 14 to 18 c/min	Mechanical / Visual bag-in-box detection
High speed servo: 18 to 22 c/min	
Advanced stainless steel execution	Random case height modus
Film roll trolley	Flaps down modus
Cross seal unit to provide leakproof block bottom bag	
Thermo transfer printer for real time printing on bags (traceability)	
One line sealing - double sided heating	
Integrated air plunger for improved bag positioning	

Pattyn North America Inc.
N56W24660 N. Corporate Circle
Sussex, WI 53089 - U.S.A.

Ph +1 262-966-0300
Fax +1 262-966-0312
SalesUsa@pattyn.com



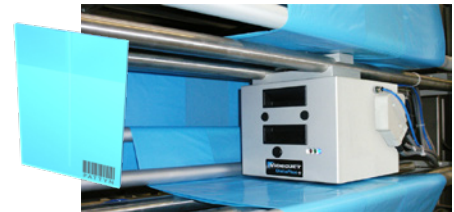
Innovative gripper and spoon module



Case flap holders



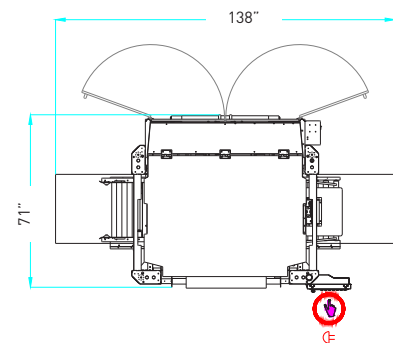
Controlled bag insertion



Optional thermo transfer printer



Optional corner seal unit 45°



Machine height with door closed 84,4 inches
Machine height with door open 110 inches

The description, pictures and information given have an indicative value. We reserve the right to make changes without notice. Information and content are property of Pattyn. For customized executions please contact Pattyn.