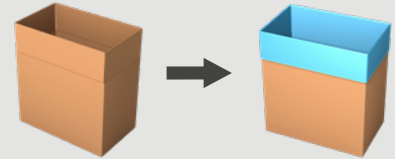


BAGMAKER INSERTER RAZIM-31

From a roll of **gusseted** or **non gusseted** tubular film, the RAZIM-31 automatically makes, cuts and inserts bags into cases.



PERFECT
BAG
INSERTION

For special applications

- **Integrated mechanical plunger.**
- Different types of **special film**, such as aluminium coated film and high barrier film.
- Double liner.

Hygienic design

- Up to **12 cases/minute**.
- Designed for maximum cleaning accessibility.



Watch our videos
at pattyn.com

TECHNICAL SPECIFICATIONS RAZIM-31

Leakproof bag

- Impulse sealing for a controlled, clean and leakproof seal.

Failsafe bag opening

- Mechanical grippers instead of delicate vacuum cups.

Perfectly controlled bag insertion

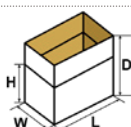
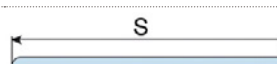
- Case flap holders for perfect case flap positioning.
- Integrated mechanical plunger.

For specific needs and specific products

- Perfect bag insertion as required for crystallizing products such as cocoa butter, CBS, fondant sugar.
- Use of different types of gusseted and non gusseted tubular film for paint powders & food ingredients.
- Use of multi-layer high barrier film for different applications.
- Insertion of two bags in one box as required for the high demanding industries

Standard equipped with:

- Integrated mechanical plunger
- Maintenance free V-shaped guillotine knife for a perfect film cut
- 15" HMI for easy operation
- Remote access point (one per line)

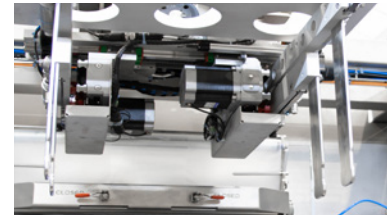
CONTAINER SPECIFICATIONS (For other dimensions, please contact Pattyn)	
Type	Cases
Range (L x W // D) inches	Multi or mono footprint (L x W) / mono height Min. 12" (L) x 8" (W) // 8" (D) Max. 23 1/2" (L) x 15 3/4" (W) // 25 1/2" (D)
	Outside dimensions
FILM SPECIFICATIONS	
Type	Gusseted or non gusseted tubular film*: aluminium coated film, multi-layer high barrier film
<i>* When running non gusseted tubular film: Max. S = 33" (S = half of circumference of the film).</i>	
Thickness	Min. 0.6 mil
Weight of film roll	Max. 132 lbs
Outside diameter film roll	Max. 17 3/4"
Inside diameter of core	3"
OUTPUT AND CONSUMPTION	
Output single liner	Up to 12 c/min when using gusseted film Up to 8 c/min when using non gusseted film
Output double liner	Please contact Pattyn
Installed power	11,5 kW
Voltage	3 x 480 V + E / 60 Hz
Air supply	90 PSI, (1/2" min)
Air consumption	2.12 ft ³ / cycle
Weight	4630 lbs
OPTIONS (More options are available, please contact Pattyn)	
Advanced stainless steel execution	Two active seal bars
Mechanical bag-in-box detection	Cross seal unit (only for gusseted film)
Film roll trolley	26lbs film roll (only for gusseted film)
Thermo transfer printer for real time printing on bags (traceability)	
Multiple case heights (For limited range only, to be checked by Pattyn)	

Pattyn North America Inc.
N56W24660 N. Corporate Circle
Sussex, WI 53089 - U.S.A

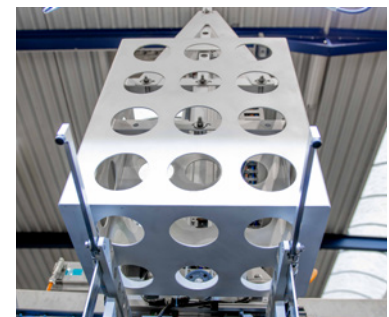
Ph +1 262-966-0300
Fax +1 262-966-0312
SalesUsa@pattyn.com



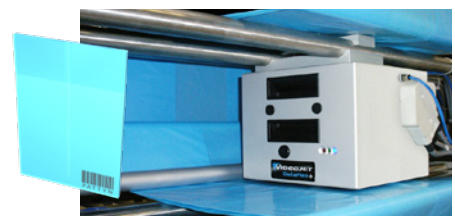
Mechanical grippers



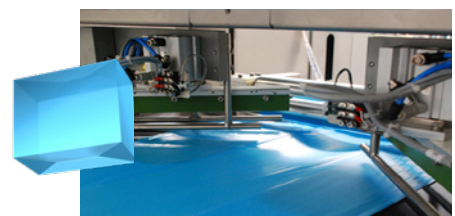
Stepper motor driven spoon module



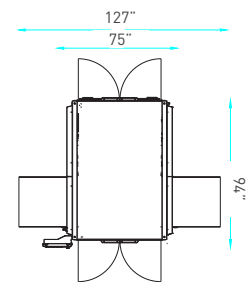
Integrated mechanical plunger



Optional thermo transfer printer



Optional corner seal unit 45°



Machine height 147"

Machine height as reference only,
depending on case height.

The description, pictures and information given have an indicative value. We reserve the right to make changes without notice. Information and content is property of Pattyn. For customized executions please contact Pattyn. Razim-31 2023 - V01