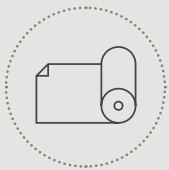
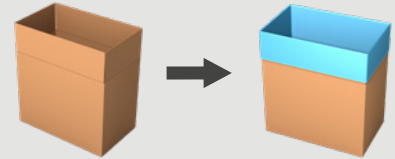


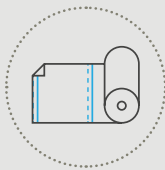
BAGMAKER INSERTER FLEXIM-31

From a roll of polyethylene film, the Flexim-31 automatically makes, cuts and inserts bags into cases, crates, trays, tins or pails. The bagmaker inserter is standard equipped with fully automatic format change.

The bagmaker inserter runs with **made-to-measure bags** or **pre-made bags from a reel**.



made-to-measure bags from a reel



pre-made bags from a reel

SOF seal off first



Minimize your bag cost

- **Save up to 30%** with made-to-measure bags from a reel.
- **Less film used** thanks to a perfectly controlled bag insertion.
- PE film starting from **0.4 mil**.

High performance & trouble-free production

- Up to **20** cases/minute.
- Up to 4000 bags on one reel for **higher autonomy**.
- **Elimination of operator errors** thanks to the fully automatic format change.
- Quick and **ergonomic film roll exchange** from the operator side.



Watch our videos at pattyn.com

TECHNICAL SPECIFICATIONS FLEXIM-31

Leakproof bag

- Impulse sealing for a controlled, clean and leakproof seal.

Failsafe bag opening

- Mechanical grippers instead of delicate vacuum cups.

Perfectly controlled bag insertion

- Case flap holders for perfect case flap positioning.
- Spoons with integrated air nozzle for gentle cuffing.
- Smart box lift for vertical box positioning.

Use of stepper motor technology

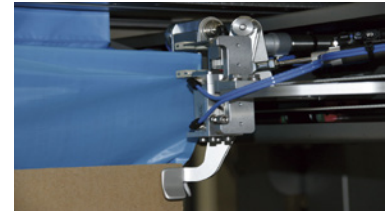
- High speed.
- Self-resolving.

Standard equipped with:

- Maintenance free V-shaped guillotine knife for a perfect film cut
- Colour touch panel for easy operation
- remote access point (one per line)



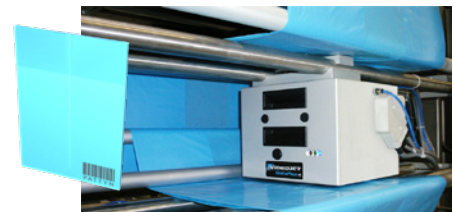
Spoons & mechanical grippers with air nozzle



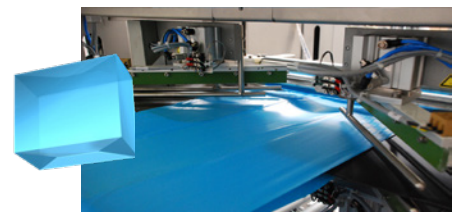
Case flap holders



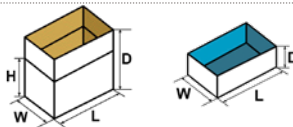
Controlled bag insertion

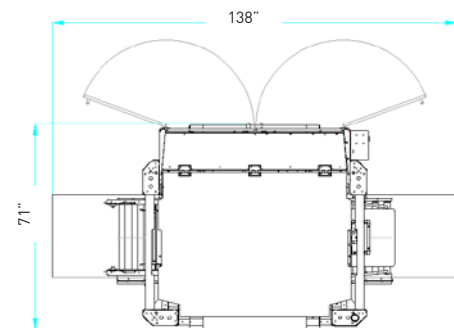


Optional thermo transfer printer



Optional corner seal unit 45°

CONTAINER SPECIFICATIONS (For other dimensions, please contact Pattyn)	
Type	Cases, boxes, trays, crates, tins, pails, polystyrene cases, ...
Range footprint (L x W // D) inches	Multi or mono footprint (LxW) / variable heights Min. 12" (L) x 8" (W) // 4" (D) Max. 31 1/2" (L) x 19 1/2" (W) // 25 1/2" (D)
	Cross seal unit 45° on both sides of the bag (6" < D < 18")* (Outside dimensions)
*7" < D < 10"	Adapted bag cuff
*D < 7"	Modified box lift necessary
FILM SPECIFICATIONS	
Type	Tubular film with gussets (side folds)
Thickness	As from 0.4 mil
Weight of film roll	Max. 132 lbs
Outside diameter film roll	Max. 18"
Inside diameter of core	3"
OUTPUT AND CONSUMPTION	
Output	Standard 14 c/min, up to 20 c/min
Installed power	4,5 kW
Installed power with cross seal unit	6 kW
Voltage	3 x 480V + E / 60 Hz
Air supply	90 PSI, (1/2" min)
Air consumption	2 ft ³ /cycle
Weight	1984 lbs
OPTIONS (More options are available, please contact Pattyn)	
Fast machine: speed above 14 to 20 c/min	Mechanical / Visual bag-in-box detection
Advanced stainless steel execution	Random case height modus
Film roll trolley	
Cross seal unit to provide leakproof block bottom bag	
Thermo transfer printer for real time printing on bags (traceability)	
Integrated flaps down mechanism	
One line of sealing, two active sides of sealing wire	
Integrated air plunger for improved bag positioning	



Machine height with door closed 84,4 inches
Machine height with door open 110 inches

Pattyn North America Inc.
N76 W30500 County Road Vv
Hartland, WI. 53029 - U.S.A

Ph +1 262-966-0300
Fax +1 262-966-0312
SalesUsa@pattyn.com



The description, pictures and information given have an indicative value. We reserve the right to make changes without notice. Information and content is property of Pattyn. For customized executions please contact Pattyn. Flexim-31 2021 - V01

PATTYN[®]

Turnkey solutions for industrial packaging.